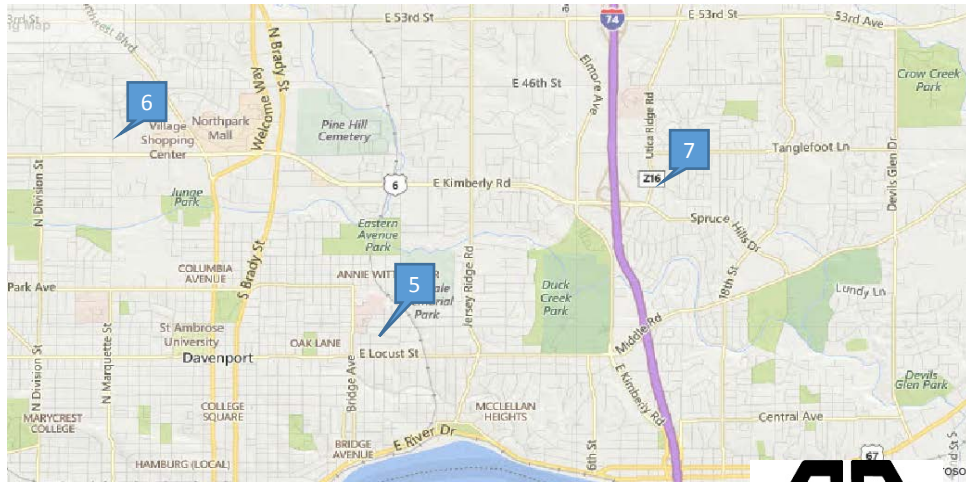
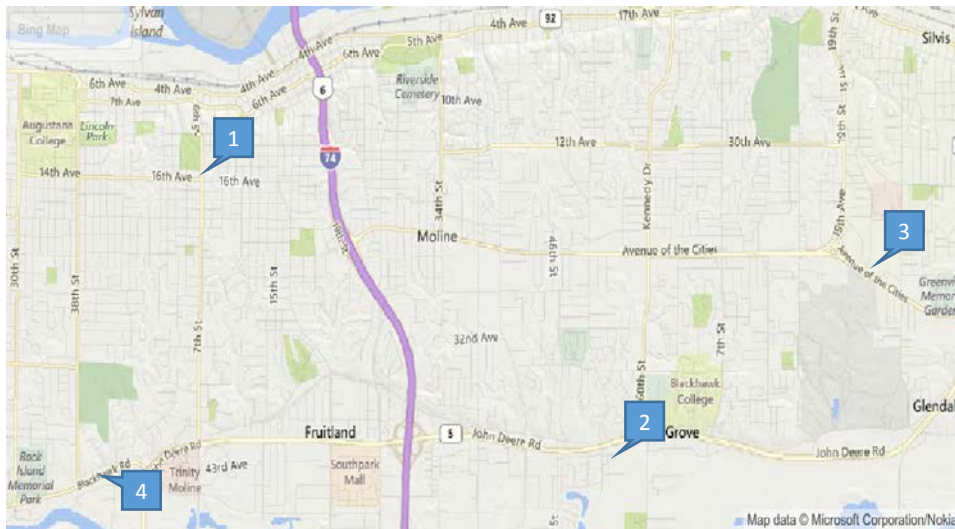


IOWA LOCATIONS



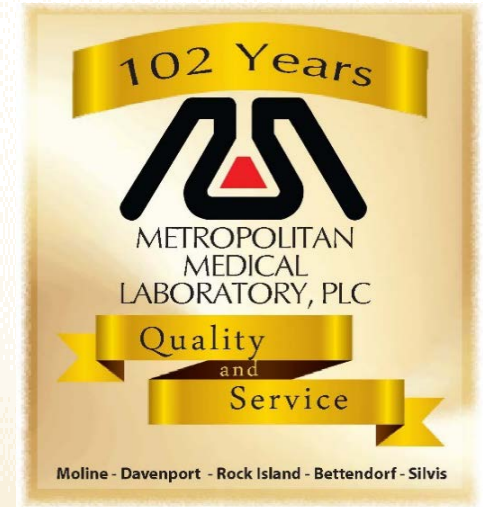
**METROPOLITAN
MEDICAL
LABORATORY, PLC**

ILLINOIS LOCATIONS



www.MetroMedLab.com

*Select the laboratory
that cares for you.*

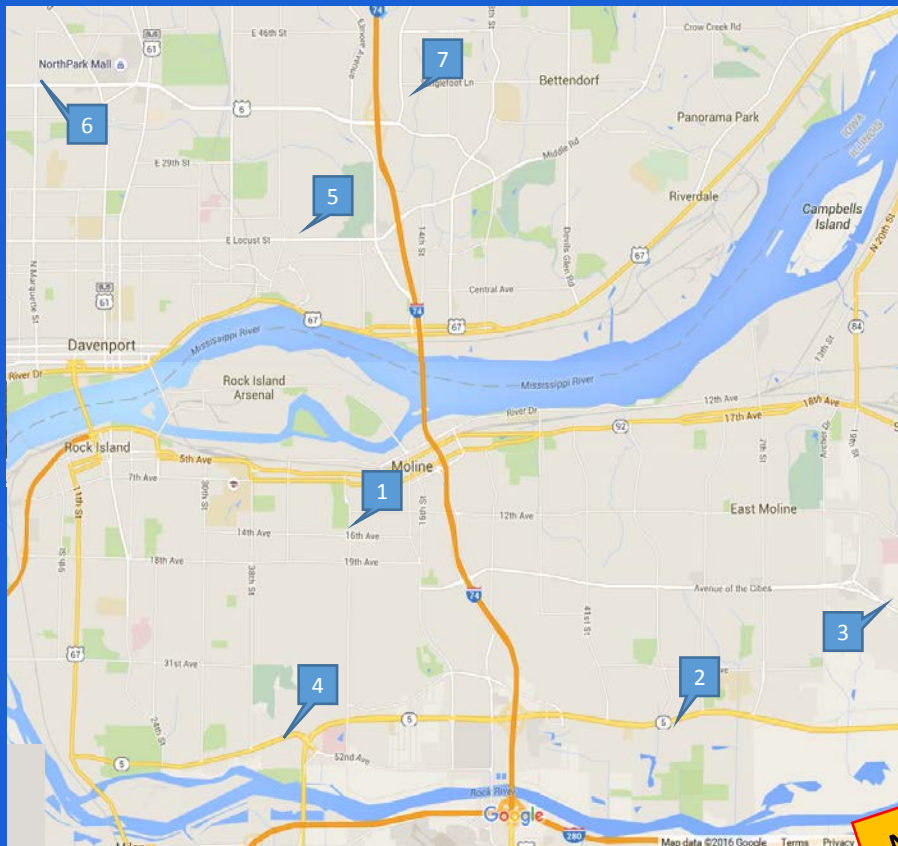


Your HEALTH
Your LAB
Your CHOICE

*Continuing to serve the Quad Cities
area with over a century of caring.*

Visit a convenient Patient Service Location nearest you.

Be sure to call us if you have any questions.



See back for detailed road map.

www.googlemap.com

NOW OPEN!

ILLINOIS

Moline

- 1520 7th St, Moline, IL
 Phone: 309-762-8555 ext. 3140
 Fax: 309-762-8232
 Hours: Mon-Fri 6 am - 6 pm
 Sat 6 am - noon

AND NOW OPEN SUNDAYS
6 am - noon

- 5401 44th Ave Dr, Moline, IL
 Phone: 309-736-7370
 Fax: 309-736-7344
 Hours: Mon-Fri 8 am - 6 pm
 Sat 8 am - noon

Silvis

- 685 Ave of the Cities, Silvis, IL
 Phone: 309-792-0200
 Fax: 309-792-0300
 Hours: Mon-Fri 6 am - 6 pm
 Sat 6 am - noon

Rock Island

- 3850 Blackhawk Rd, Ste H1,
 Rock Island, IL
 Phone: 309-786-2926
 Fax: 309-786-3088
 Hours: Mon-Fri 6 am - 6 pm
 Sat 6 am - noon

IOWA

Davenport

- 1828 E. Locust St, Davenport, IA
 Phone: 563-324-0471
 Fax: 563-324-0151
 Hours: Mon-Fri 6 am - 6 pm
 Sat/Sun 6 am - noon

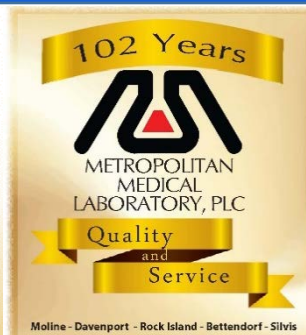
- 3906 Lillie Ave, Ste 3, Davenport, IA
 Phone: 563-386-3000
 Fax: 563-386-1363
 Hours: Mon-Fri 6 am - 6 pm
 Sat 6 am - noon

Bettendorf

- 3625 Utica Ridge Rd, Ste D, Bettendorf, IA
 Phone: 563-345-6575
 Fax: 563-345-6577
 Hours: Mon-Fri 6 am - 6 pm
 Sat 6 am - noon

We are located at the rear of the building (east side) in the upper level. Plenty of convenient parking!

Your Health
 Your Lab
 Your Choice



Patients Say...

"The employees love their jobs..."

"Great job!"

"Always a welcome and friendly place. Don't change."

"Metro Lab has the most consistent excellent service and staff."